



ITI - R&D&I Center

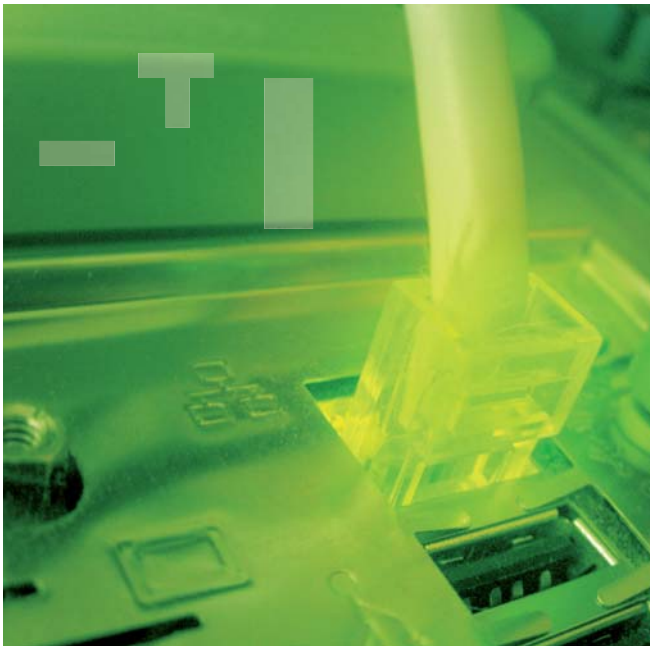


The Polytechnic City of Innovation - ITI Venue

The **ITI - Instituto Tecnológico de Informática** is a Technology Centre specialising in software technology Research, Development and Innovation. Created in 1994 as an initiative of the IMPIVA, the UPV and a group of companies from the IT sector, the ITI was set up as a non-profit organisation.

Its mission is to improve and maintain the competitive positioning of companies in the IT sector by means of R&D&I and the provision of advanced services.

The ITI has its headquarters in the Ciudad Politécnica de la Innovación at the Universidad Politécnica de Valencia, where it has a surface area of over 1600 m² equipped with laboratories for prototypes, hardware and software testing, and training rooms. It has a team of 120 employees, with extensive experience in developing national and international research projects, in collaboration with companies and institutions.

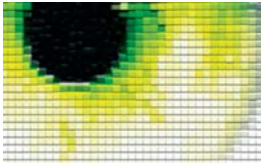


What does the **ITI** have to offer **companies**?

The **ITI** offers companies the possibility of adding the technologies and capabilities developed in R&D&I projects to its products, processes or business. The technologies and services on offer are the result of a combination of advanced scientific knowledge and experience in collaboration with companies. In order to fulfil its aims, it has a technological observatory and participates in technological platforms, developing basic and applied research projects, attending conferences and other forums of scientific and industrial knowledge.

Working with the ITI provides **great flexibility and the possibility of adapting its technologies and capabilities** to the specific needs of each project, since all the technologies emerge from its own R&D.

Groups & Areas of Activity



Computer Vision

Character recognition in multiple environments: OCR, ICR, OCV, number plates, cursive handwritten text, etc.

Quality control in industrial environments

Inspection of X-ray images

Recognition of shapes and classification of articles, materials, etc. using machine vision



Biometrics

Development of biometric systems to be implemented in control and security systems or devices

Biometric recognition: fingerprints, face, palm, voice, etc.



Language Processing and Voice Recognition

Automatic recognition of speech and comprehension

Voice controlled and entry devices

Automatic speech translation

Intelligent systems for assisting text translators

Processing of ancient texts



Software Quality and Testing

Testing and certification of functionality, accessibility, load, stress and performance
Implementation and improvement of testing methods and processes

Test factory. Laboratory to test usability of applications, websites and devices

Software quality



IT and Industrial Automation

Industrial computing

Computer graphics

Stock control and SPM systems



Healthcare technology

Signal processing

Cardiology Holter monitor

Biomedical engineering

Computer interfaces between electroencephalogram and brain

E-healthcare



Optimization for Logistics and Production

Optimized production planning and scheduling applications

Logistic optimization: routes, optimal warehouse location

Distributed Systems

High-availability systems

Replicated databases

Database access monitoring

Computer Security

Vulnerability detection systems

Intruder detection systems

Event correlation algorithms

Security methods

Technology and Services

Application auditing

Application and database development consulting

Application development architectures

Communication and integration protocols and platforms

Interoperability and integration of technology
Networks and systems

Methodology for migration to free software

Distribution and transfer of existing Open Source applications

Experts in Linux, Java, .net, Corba/RMI, etc.

Embedded systems development

Other services

Advice on national and international assistance and grants and participation in subsidised programs and projects.

Access to various European technological cooperation networks to which the ITI belongs

Search for partners for projects

Training. The ITI periodically conducts training activities, scheduled or on demand, dealing with ICT-related technical and management aspects. In addition, it organises technological awareness sessions, with a view to promoting the inclusion of new technologies in the socio-economic environment.